



THE
DESIGNER'S WORKSPACE:
ULTIMATE
OFFICE
DESIGN

Douglas B. Caywood



Watson Tate Savory

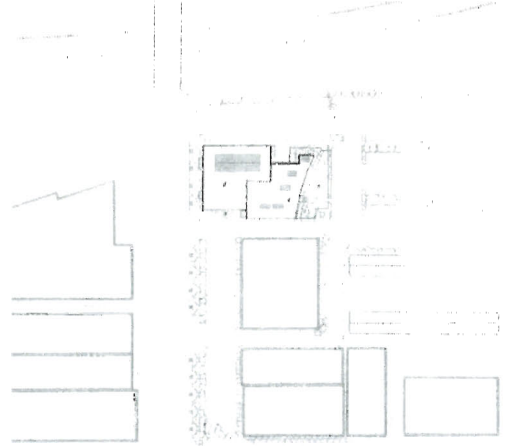


The office of Watson Tate Savory is an adaptive reuse of an existing one-story, light industrial warehouse, which had been in partial use as a storage shed and partially abandoned. The building was renovated as a speculative venture for tenant fit-up. The rear portion of the building comprises the architects' office.



As a project designed by a client group for its own use, the office of Watson Tate Savory provides not only a chance to explore a vanishing urban industrial fabric, but also an opportunity to express to a growing community the possibilities inherent in older, historically unremarkable buildings.

Programmatic requirements for Watson Tate Savory include work stations with expansion space for a staff of twenty, a conference room, a reference library, a kitchenette, a reception area and storage. Spaces are organized around a matrix of public/private functions in response to an L-shaped shell. The interior is modulated by a series of horizontal and vertical planes bisecting a central administration and research pavilion. Wood panels, arranged in sequence, fracture and further articulate the space, which is composed through a system of geometric overlays of squares and golden sections. Light is introduced, not only through existing window openings, but also through newly constructed clerestory "monitors", built over existing openings that once contained industrial skylights.

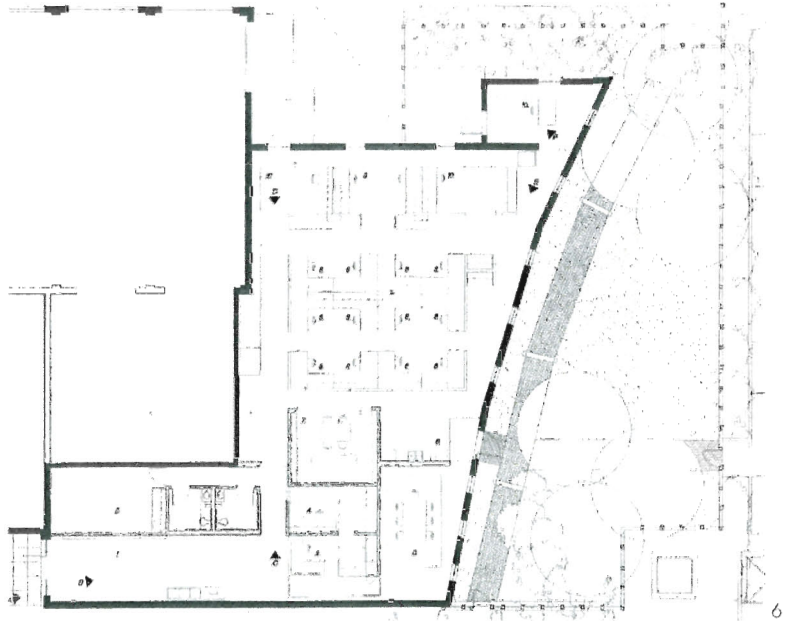


Situated alongside a railroad cut used for the transport of industrial freight, the north facade of the office curves in response to a fragment of a rail delivery spur that originally tied to the



- 1 Exterior at Night
- 2 Site Plan
- 3 Reception/Gallery
- 4 Entry
- 5 Corridor
- 6 Floor Plan

Photography Credits:
G.MatsonPhoto



main track. Surrounding the site, other fragments of an earlier industrial age dependent on the railroad remain as well, in various stages of prosperity and decay.

As this immediate neighborhood is revitalized and developed into a new commercial district, it is these fragments of a modest bygone industrial community that this project seeks to engage. By utilizing simple industrial materials found in the immediate neighborhood and by intervening delicately in the existing structure, the design attempts to provide a point of repose from which to consider the contribution of background buildings to the patina of a particular urban experience.